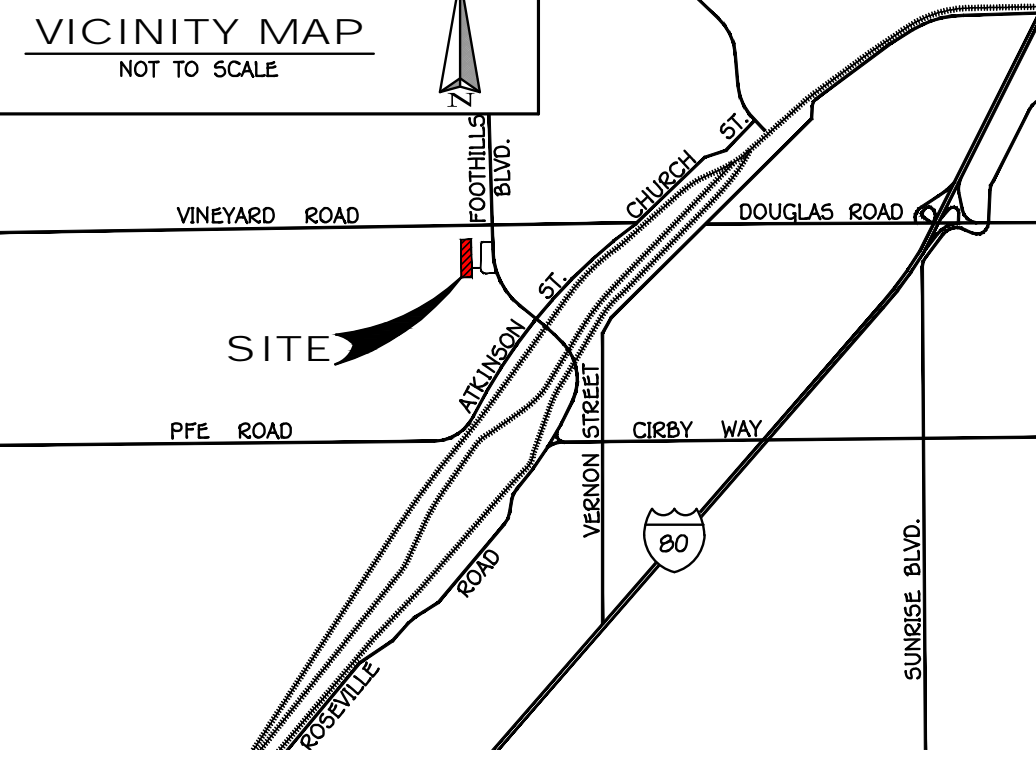
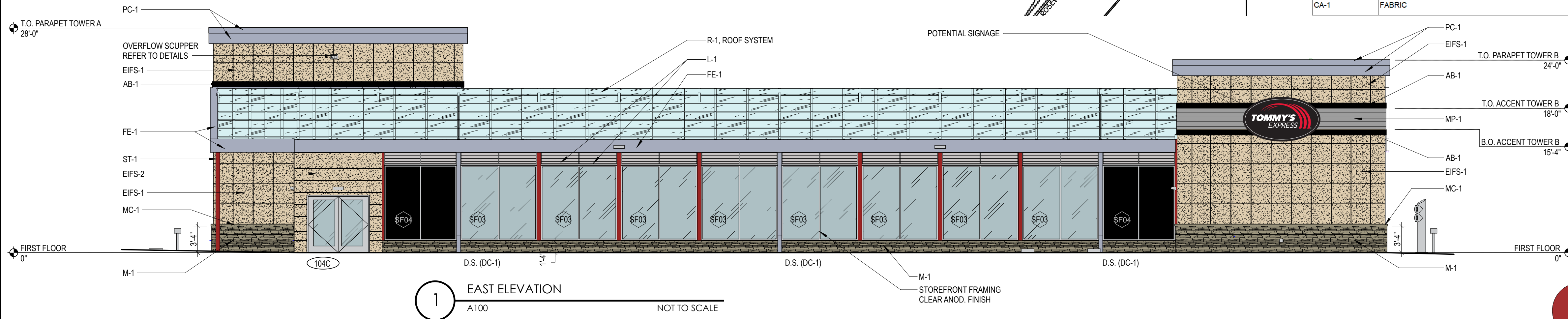


# TOMMY EXPRESS P2842

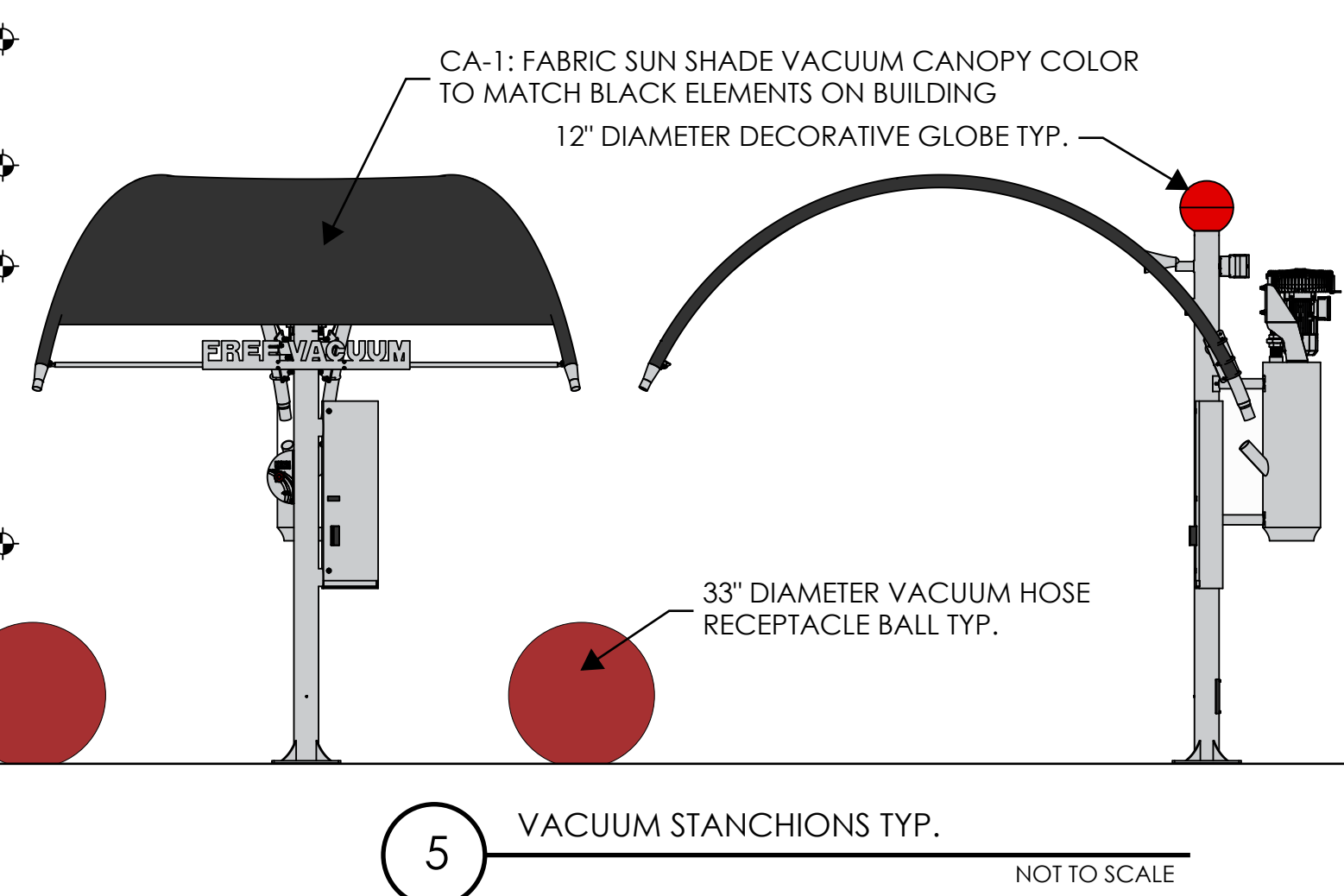
ROSEVILLE, CA



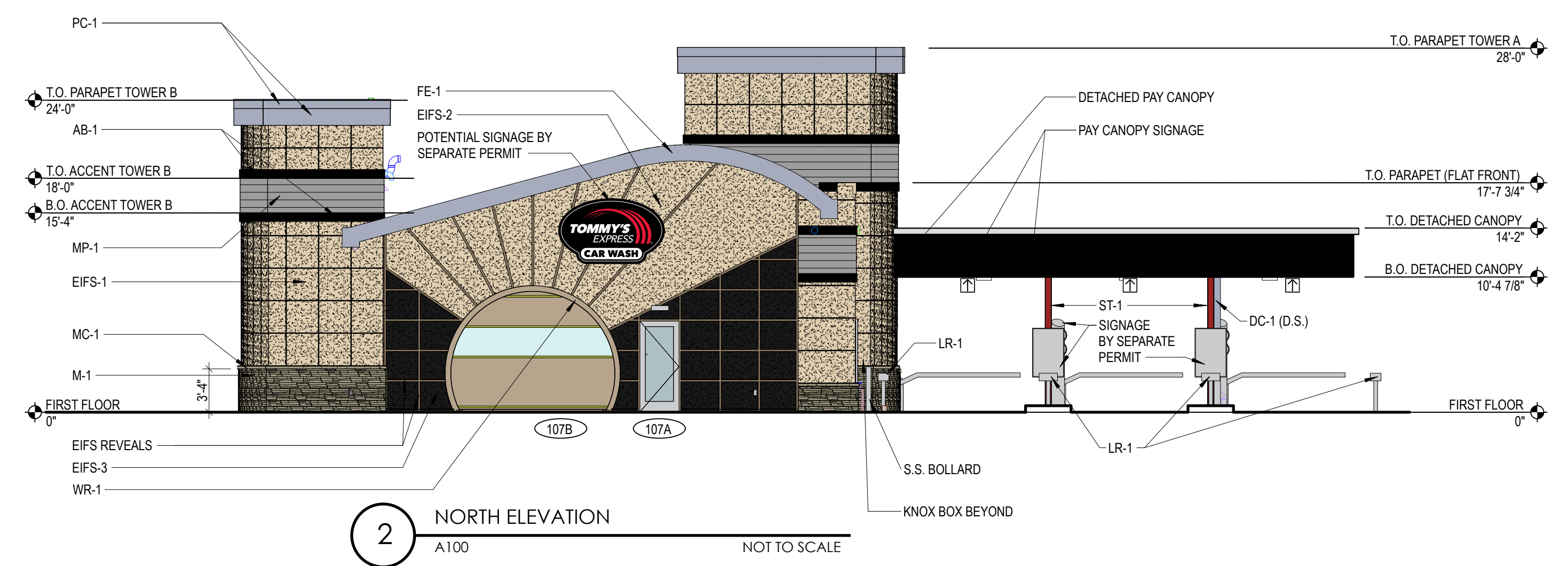
TAG	MATERIAL	MANUFACTURER	DESCRIPTION	COLOR	FURNISHED BY	INSTALLED BY
ST-1	STRUCTURAL STEEL	PROSPANT (RBI)	POWDER COATED STRUCTURAL STEEL	RAL 3001 SILVERSMITH	TOMMY'S	TOMMY'S
MP-1	PROFILED ALUMINUM METAL PANEL	ATAS	ATAS 7.2 BWR360 BELVEDERE	MATCH TO DURON 8202W COAST POINT	TOMMY'S	G.C.
S-1	STUCCO WITH ACRYLIC TOPCOAT FINISH	DRYVIT INC.	TRADITIONAL 3 COAT STUCCO FINISH SYSTEM WITH 30" X 30" REVEAL	MATCH TO DURON 8202W COAST POINT	G.C.	G.C.
S-2	STUCCO WITH ACRYLIC TOPCOAT FINISH	DRYVIT INC.	TRADITIONAL 3 COAT STUCCO FINISH SYSTEM WITH CUSTOM REVEAL	MATCH TO DURON 8202W COAST POINT	G.C.	G.C.
S-3	STUCCO WITH ACRYLIC TOPCOAT FINISH	DRYVIT INC.	TRADITIONAL 3 COAT STUCCO FINISH SYSTEM WITH CUSTOM REVEAL	MATCH TO TRICORN BLACK SW 6258	G.C.	G.C.
M-1	STONE VENEER	ELDORADO STONE	STACKED STONE	GASTAWAY	G.C.	G.C.
MC-1	STONE VENEER SILL	ELDORADO STONE	WAINSCOT SILL	MATCH M-1	G.C.	G.C.
AB-1	PREFIN. ALUM. PARAPET CORNICE	ATAS	ATAS FLAT SHEET	BLACK	TOMMY'S	G.C.
PC-1	PREFIN. ALUM. PARAPET CORNICE	ARCONIC	REYNOBOND COMPOSITE PANELS	BRIGHT SILVER METALLIC	TOMMY'S	G.C.
SF01, SF02, SF03	PREFIN. ALUM. STOREFRONT WITH INSULATED GLASS	KAWNEER	1" INSULATED GLASS LOW-E	CLEAR ANNOXIDIZED	G.C.	G.C.
SF04	PREFIN. ALUM. STOREFRONT WITH METAL PANEL INFILL	KAWNEER / CITADEL	1" GLAZE GUARD 1000 WR+ PANEL INFILL - SEE DETAIL ON A602	CLEAR ANNOXIDIZED FRAMES / EBONY INFILL PANELS	G.C.	G.C.
DC-1	PREFINISHED ALUMINUM	ALPOLIC	4MM MCM PANELS DOWNSPOUT COVER	METALLIC SILVER	TOMMY'S	TOMMY'S
LR-1	LICENSE PLATE READER	BOLLARD		STAINLESS STEEL	TOMMY'S	G.C.
WR-1	PREFIN. ALUM. COMPOSITE PANELS	ARCONIC	MCM WRAP COVER FOR STEEL RING	CLEAR ANNOXIDIZED	TOMMY'S	G.C.
FE-1	FASCIA / EAVE	ALPOLIC	4MM MCM PANELS AT EAVES AND FASCIA	METALLIC SILVER	TOMMY'S	TOMMY'S
L-1	PREFIN. ALUM. LOUVER	RUSKIN	DRAINABLE LOUVER	CLEAR ANNOXIDIZED	TOMMY'S	TOMMY'S
R-1	ACRYLIC ROOF SYSTEM	ACRYLITE	DRAINABLE ACRYLIC ROOF SYSTEM	COOL BLUE WHITE	TOMMY'S	TOMMY'S
CA-1	FABRIC	CANVAS INNOVATIONS	VACUUM CANOPY SUN SHADE	MATCH TO BLACK ELEMENTS ON BUILDING	TOMMY'S	TOMMY'S



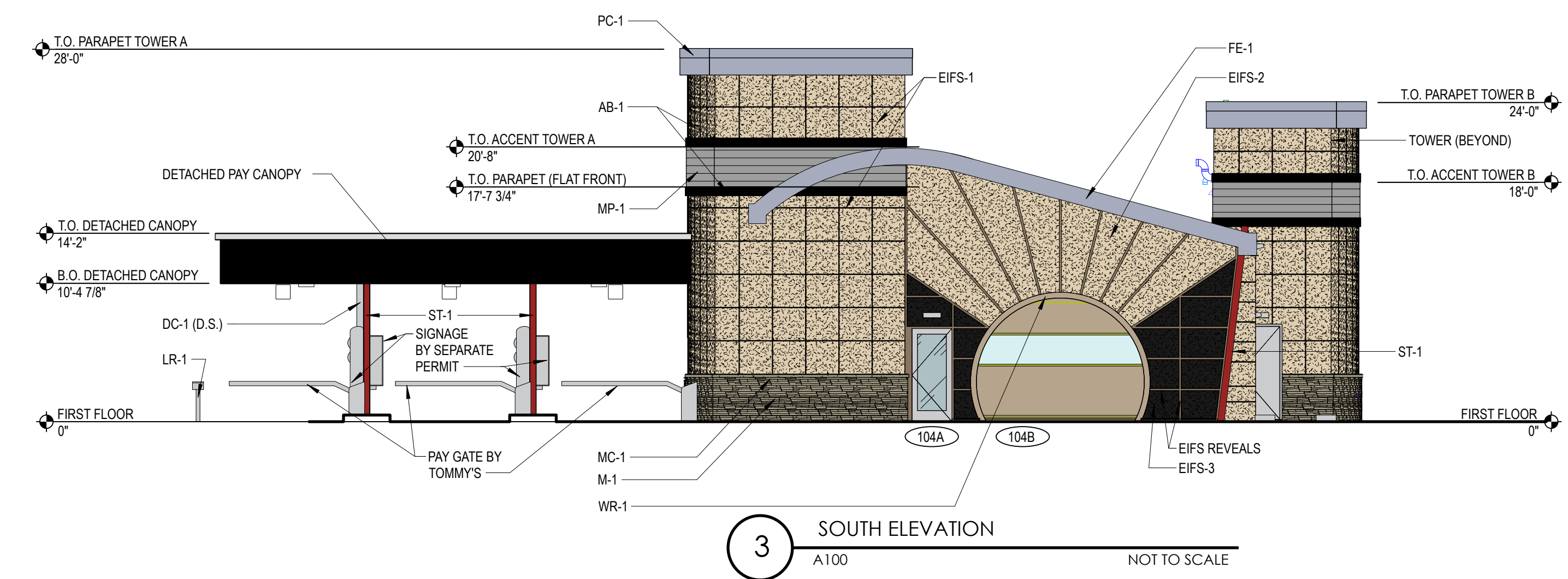
1 EAST ELEVATION A100 NOT TO SCALE



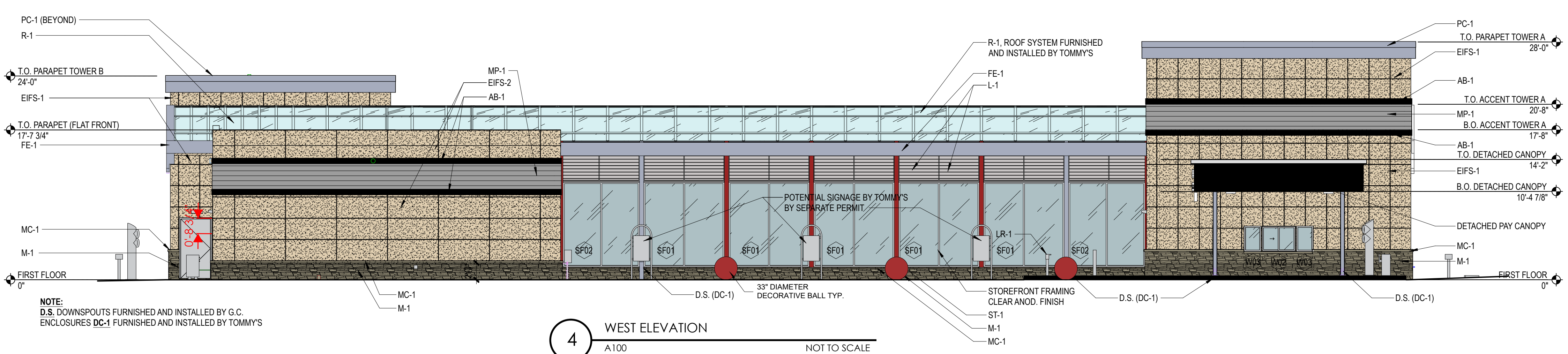
5 VACUUM STANCHIONS TYP. NOT TO SCALE



2 NORTH ELEVATION A100 NOT TO SCALE



3 SOUTH ELEVATION A100 NOT TO SCALE



4 WEST ELEVATION A100 NOT TO SCALE

**EXTERIOR MATERIALS LEGEND**

	STUCCO
	CULTURED STONE
	PREFINISHED METAL COPING
	ALUM. FLAT STOCK (BLACK)
	PROFILED METAL PANEL
	GLAZING

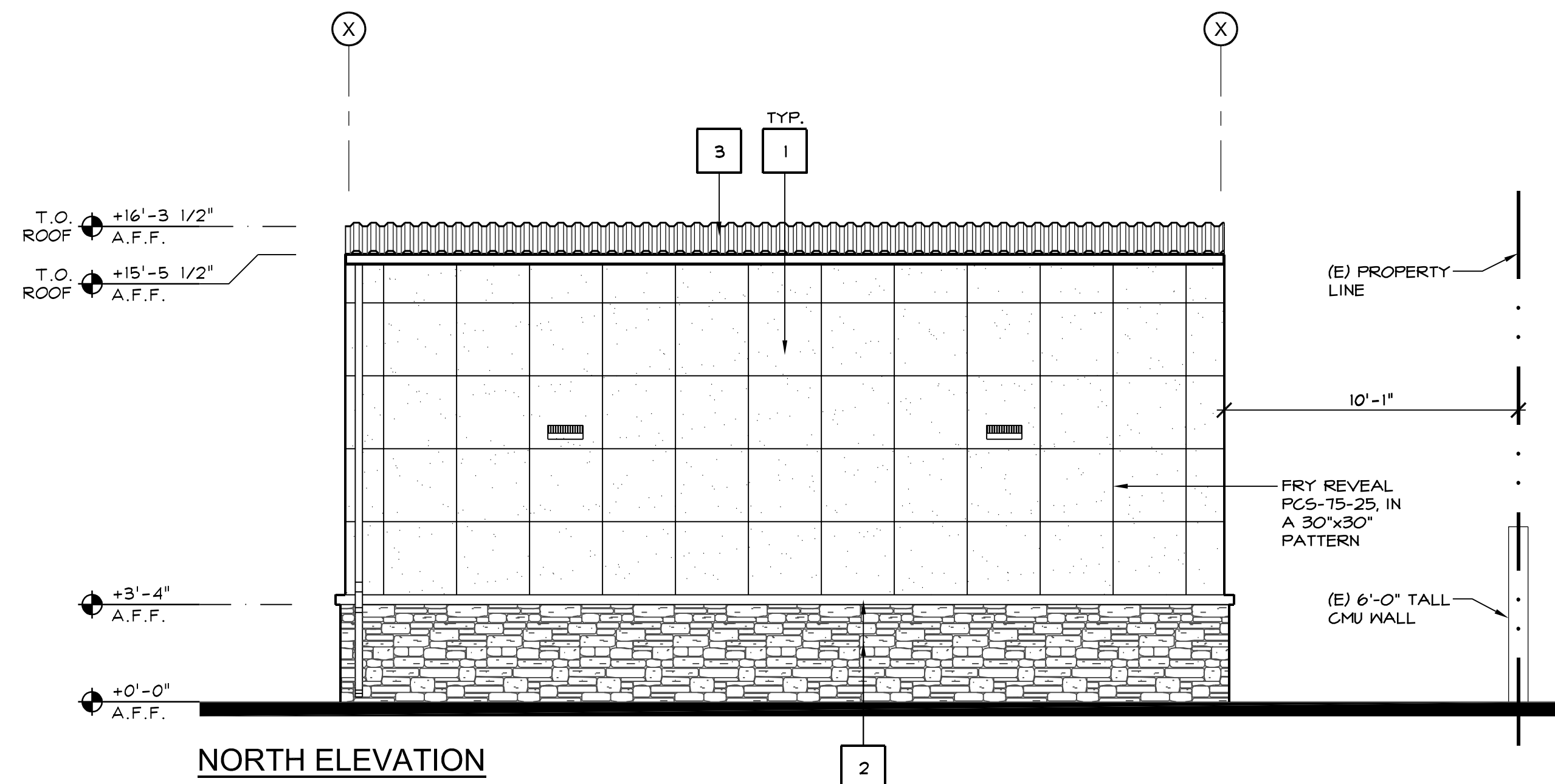
NOTE: D.S. DOWNSPOUTS FURNISHED AND INSTALLED BY G.C. ENCLOSURES DC-1 FURNISHED AND INSTALLED BY TOMMY'S

CONFIDENTIAL WARNING: THIS SHEET CONTAINS AND CONSTITUTES CONFIDENTIAL INFORMATION, IMAGES, AND TRADE SECRETS OF TOMMY CAR WASH SYSTEMS. ANY UNAUTHORIZED USE OR DISCLOSURE OF ANY OR PORTION THEREOF, IS STRICTLY PROHIBITED. THIS WORK IS THE EXCLUSIVE PROPERTY OF TOMMY CAR WASH SYSTEMS. ALL RIGHTS RESERVED.

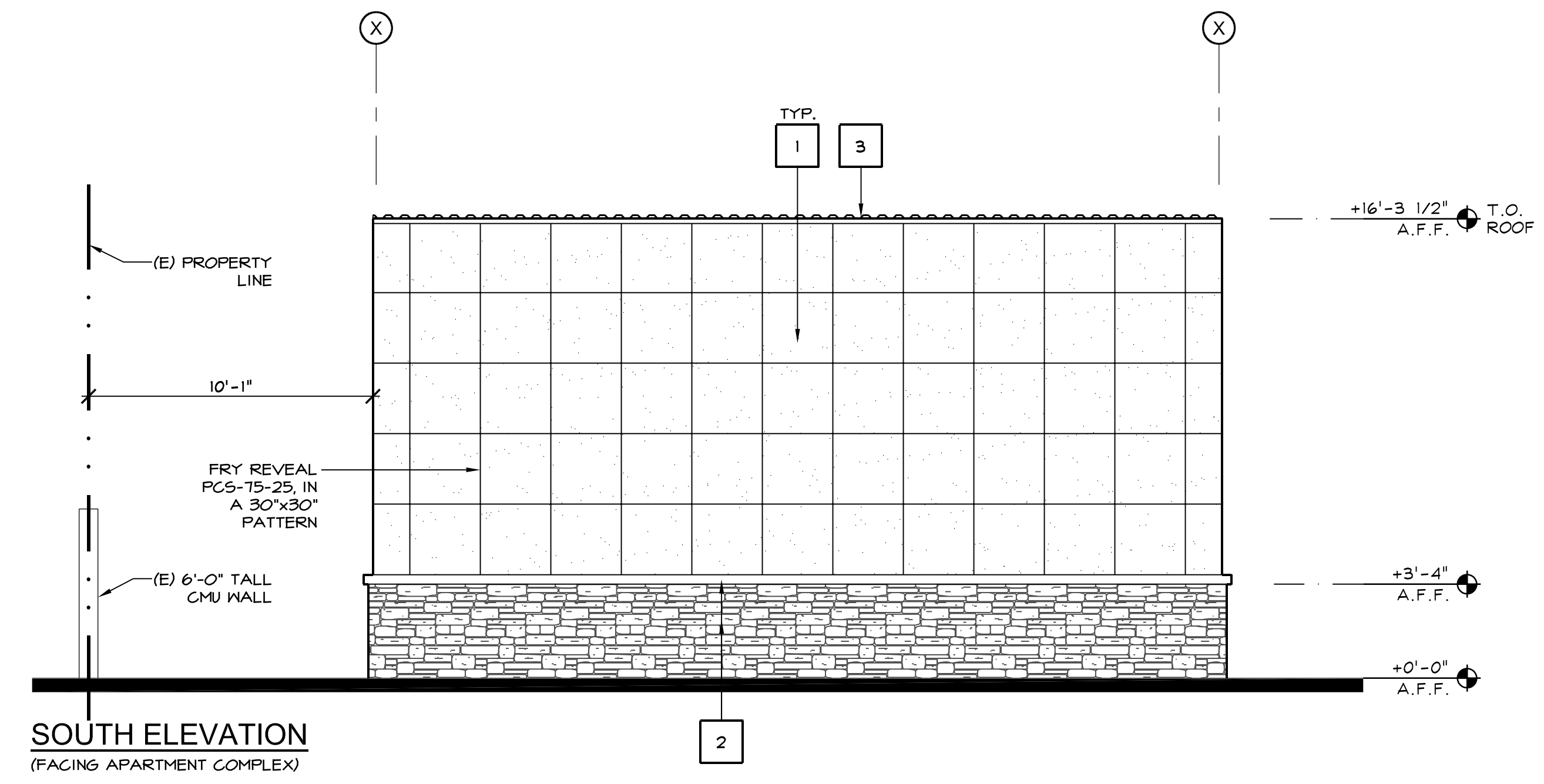
CUSTOM EXTERIOR ELEVATIONS IN COLOR  
**TOMMY CAR WASH SYSTEMS**  
 TOMMY EXPRESS #P2842  
 2990 FOOTHILLS BLVD  
 ROSEVILLE, CA 95747

NOT FOR CONSTRUCTION

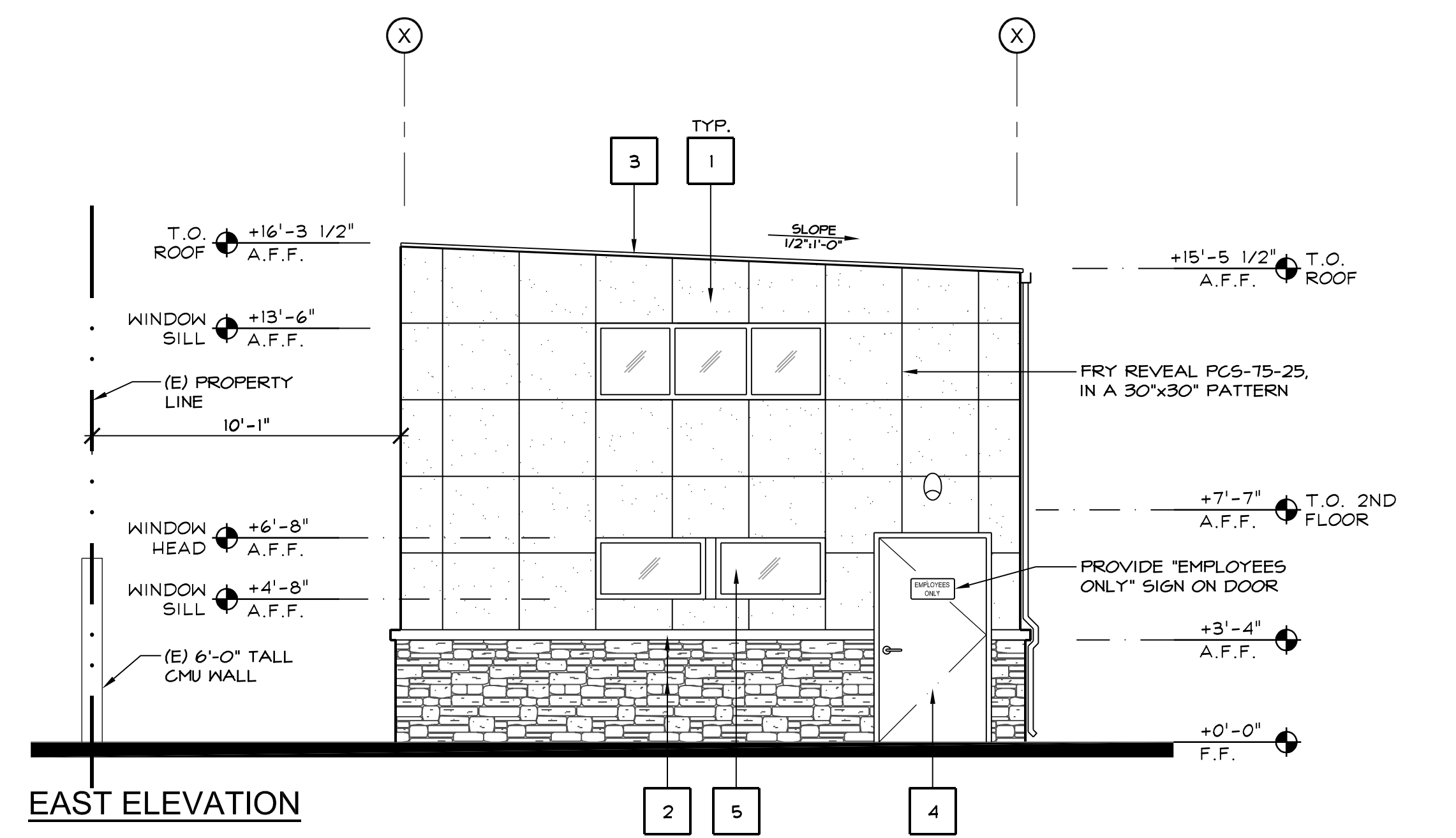
A200  
 7/14/2021  
 NOT TO SCALE



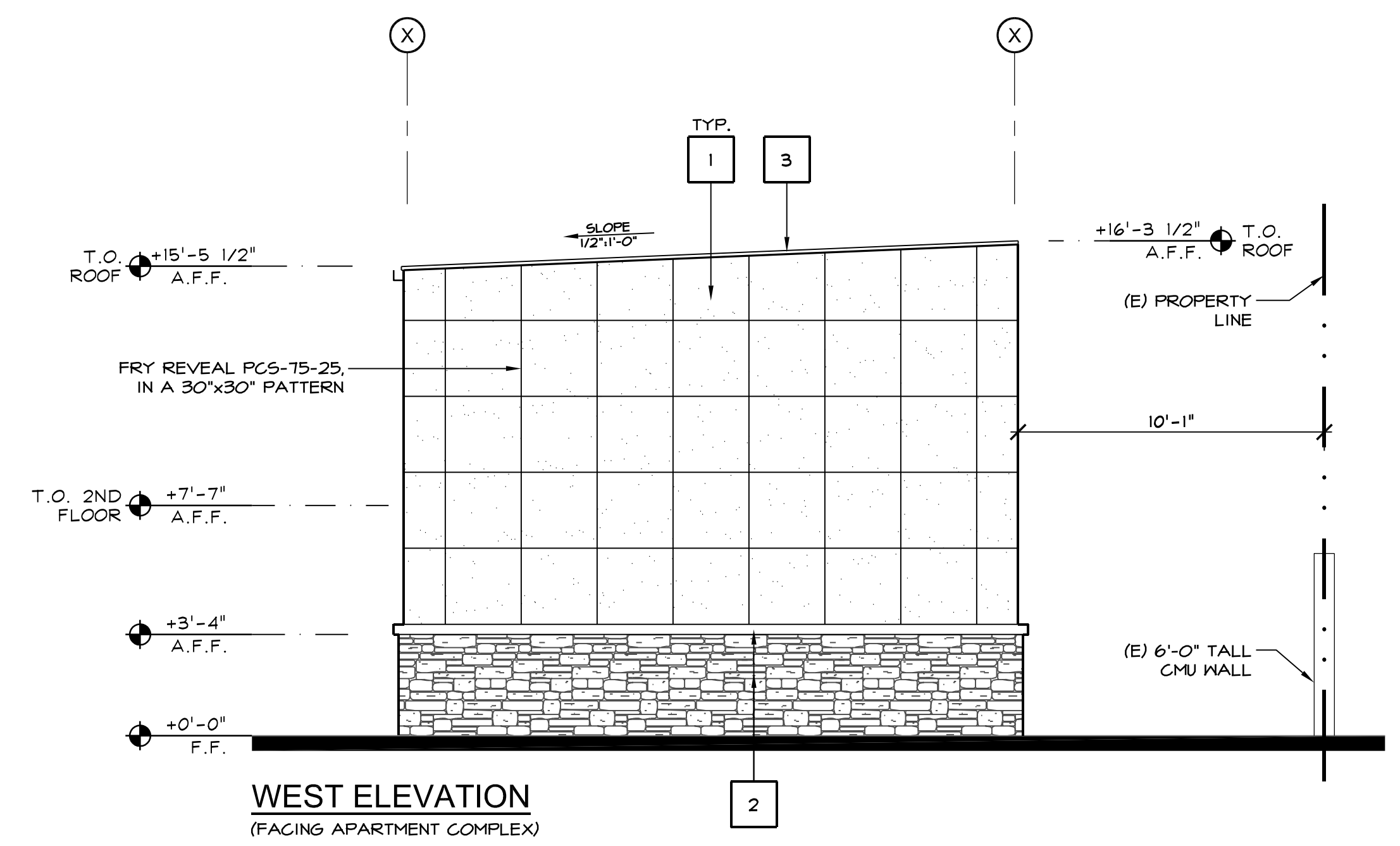
NORTH ELEVATION



SOUTH ELEVATION  
(FACING APARTMENT COMPLEX)



EAST ELEVATION



WEST ELEVATION  
(FACING APARTMENT COMPLEX)

KEYNOTES			3
KEY	MATERIAL	COLOR / FINISH	
1	7/8" EXTERIOR CEMENT PLASTER, ELASTOMERIC TOP COAT - FIELD	COLOR TO MATCH "DRYVIT #8202W COAST POINTE" (MAIN COLOR OF CAR WASH)	
2	STONE VENEER	ELDORADO STONE "CASTAWAY" STACKED STONE w/ WAINSCOT SILL	
3	STANDING SEAM METAL ROOF	-	
4	MISC. METALS	PAINTED TO MATCH 1	
5	STOREFRONT GLAZING	KAWNEER 1" INSULATED LOW-E GLAZING w/ CLEAR ANODIZED FRAMES	
-	-	-	
-	-	-	


This document, the ideas and designs incorporated herein, are solely the property of the property owner and is not to be used, in whole or in part for any project or duplication, without written authorization.  
© COPYRIGHT 2021



**PROPOSED STORAGE BUILDING**  
2980 FOOTHILLS BLVD., ROSEVILLE, CALIFORNIA 95747  
STORAGE BUILDING - ELEVATIONS

ISSUE DATE: 10-6-21  
REV. DATE:  
PROJECT NO.: 20009  
DRAWN BY: NL  
SHEET: